

Ballet Uniform Centre Stage 2023/24

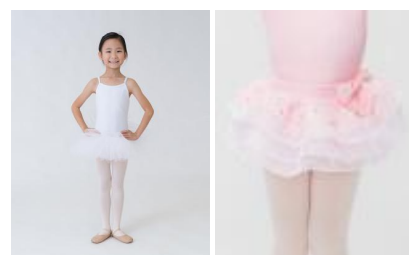
Please see the list below for ballet uniform requirements. Uniforms can be purchased at **Sonata Dancewear** (Funan Mall) or **Capezio** (Forum). Any questions, please check with the teacher.

**** Please ensure uniform is well fitting, including shoes - shoes that are too big can be a safety risk. Hair must be in a ballet bun so that the neck is visible, please use bun net and pins to ensure that it is secure for class****

Girls

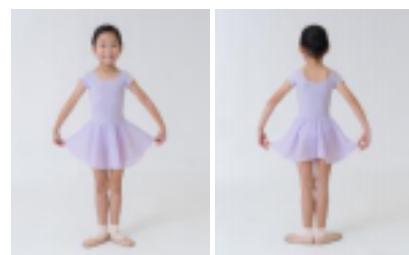
Tots

- Tots Tutu (any colour)
- Ballet ankle socks or tights (*pink, or to match skin tone*)
- **Full sole** ballet shoes



Beginner 1 & 2 Ballet

- **Lilac** leotard and attached chiffon skirt (Sonata Code: SD11)
- Ballet ankle socks or tights (*pink, or to match skin tone*)
- **Full sole** ballet shoes with elastic
- Hair in a ballet bun (*short hair can be kept off the face/neck with a hairband*)



Pre-Primary Ballet

- **Pink**, short sleeved or sleeveless leotard (Sonata code: CT200/CT100)
- **Pink**, prima princess crossover skirt (Sonata code: PPC01)
- Ballet ankle socks or tights (*pink, or to match skin tone*)
- **Full sole** ballet shoes with elastic
- Hair in a ballet bun (*short hair can be kept off the face/neck with a hairband*)
- Matching wrap around ballet cardigans may be worn



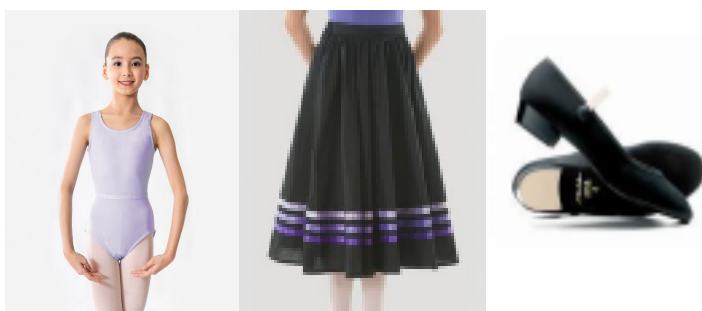
Primary Ballet

- **Blue**, sleeveless leotard (Sonata code: CT100)
- **Ice** crossover skirt, (Sonata code: WSK18)
- Ballet tights (*pink, or to match skin tone*)
- **Full sole** ballet shoes with elastic
- Hair in a ballet bun (*short hair can be kept off the face/neck with a hairband*)
- Matching wrap around ballet cardigans may be worn



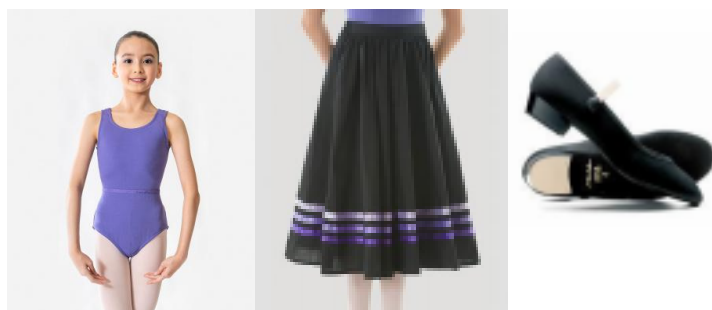
Grade 1 Ballet

- **Lilac**, Sleeveless leotard with **waistband** (Sonata code: CT100)
- Ballet tights (*pink, or to match skin tone*)
- **Full sole** ballet shoes with elastic (*pink, or to match skin tone*)
- Character skirt with purple ribbons (Sonata Code: SL04C) – *mid-calf in length*
- Black **low heel** character shoes (Sonata code: S0326)
- Hair in a ballet bun (*short hair can be kept off the face/neck with a hairband*)
- Matching wrap around ballet cardigans may be worn



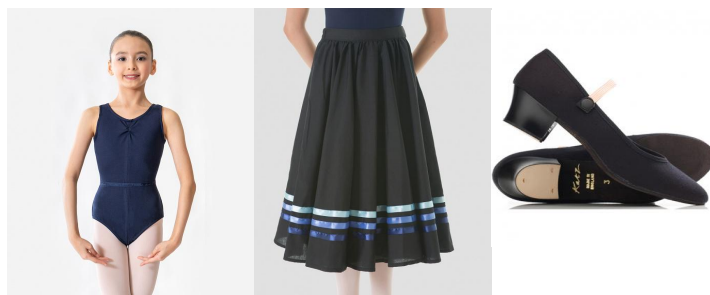
Grade 2 Ballet

- **Jacaranda**, Sleeveless leotard with **waistband** (Sonata code: CT100)
- Ballet tights (*pink or to match skin tone*)
- **Full sole** ballet shoes with elastic (*pink or to match skin tone*)
- Character skirt with purple ribbons (Sonata code: SL04C) - *mid-calf in length*
- Black, **low heel** character shoes (Sonata code: S0326)
- Hair in a ballet bun (*short hair can be kept off the face/neck with a hairband*)
- Matching wrap around ballet cardigans may be worn



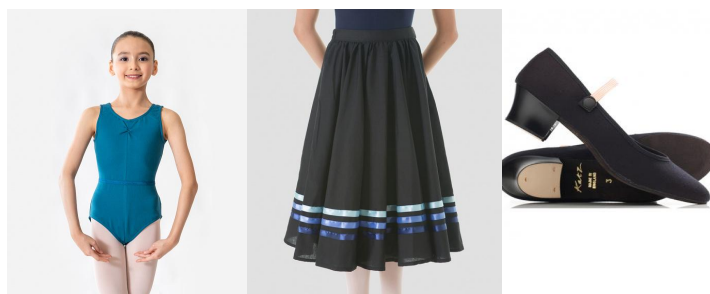
Grade 3 Ballet

- **Navy**, sleeveless leotard with **Waistband** (Sonata code: CT300)
- Ballet tights (*pink, or to match skin tone*)
- **Full sole** leather ballet shoes with elastic or ribbons (*pink or to match skin tone*)
- Character skirt with blue ribbons (Sonata Code: SL04B) - *mid-calf in length*
- Black, **Cuban heel** character shoes (Sonata code: S0325)
- Hair in a ballet bun (*short hair can be kept off the face/neck with a hairband*)
- Matching wrap around ballet cardigans may be worn



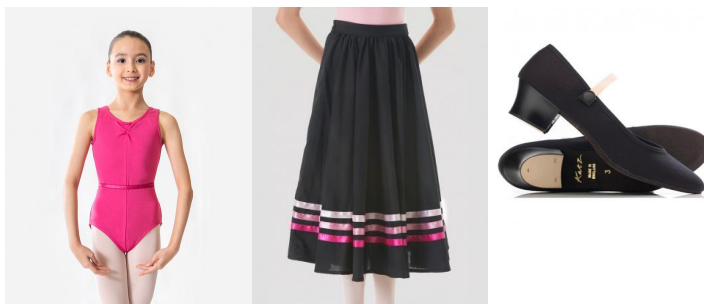
Grade 4 Ballet

- **Mallard**, sleeveless leotard with **waistband** (Sonata code: CT300)
- Ballet tights (*pink, or to match skin tone*)
- **Full sole**, or **split sole** ballet shoes with ribbons or elastics (*canvas or leather, pink or to match skin tone and tights*)
- Character skirt with blue ribbons (Sonata code: SL04A) - *mid-calf in length*
- Black, **Cuban heel** character shoes (Sonata code: S0325)
- Hair in a ballet bun (*short hair can be kept off the face/neck with a hairband*)



Grade 5 Ballet

- **Mulberry or Fuschia**, leotard with **waistband** (Sonata code: CT300 or SL4473)
- Ballet tights (*pink, or to match skin tone*)
- **Full sole**, or **split sole** ballet shoes with ribbons or elastics (*canvas or leather, pink or to match skin tone and tights*)
- Character skirt with pink ribbons (Sonata code: SL04A) - *mid-calf in length*
- Black, **cuban heel** character shoes (Sonata code: S0325)
- Hair in a ballet bun (*short hair can be kept off the face/neck with a hairband*)



Grade 6 & 7 Ballet

- **Burgundy**, any classical style leotard (*check style options with teacher - images below are for reference*)
- Ballet tights (*pink, or to match skin tone*)
- **Burgundy**, long, circular chiffon skirt (Sonata code: WSK04)
- **Split sole** ballet shoes with ribbons or elastic (*canvas or leather, pink or to match skin tone*)
- Character skirt with pink ribbons (Sonata code: SL04B) - *mid-calf in length* • Black, **Cuban heel** character shoes (Sonata code: S0325)
- Hair in a ballet bun (*short hair can be kept off the face/neck with a hairband*)



Grade 8 Ballet

- **Navy**, Classical style leotard (*check style options with teacher, capped sleeves are allowed*)
- Ballet tights (*pink, or to match skin tone*)
- **Navy**, long, circular chiffon skirt (Sonata code: WSK04)
- **Split sole** ballet shoes with ribbons or elastic (*canvas or leather, pink or to match skin tone/tights*)
- Character skirt with blue or pink ribbons (Sonata code: SL04B)
- Black, **Cuban heel** character shoes (Sonata code: S0325)
- Hair in a ballet bun (*short hair can be kept off the face/neck with a hairband*)



Discovering Repertoire Level 1, 2 and 3

- **Black**, Classical style leotard (*check style options with teacher*)
- Ballet tights (*pink, or to match skin tone*)
- **Split sole** ballet shoes with ribbons or elastic (*canvas or leather, pink or to match skin tone/tights*)
- **Black**, Asymmetric chiffon ballet skirt (*See picture for style reference - optional*)



Intermediate Foundation and Intermediate

- **Cobalt**, sleeveless leotard (Sonata code: SL4467)
- Ballet tights (*pink, or to match skin tone*)
- Ballet shoes with ribbons
- Hair in a ballet bun (*short hair can be kept off the face/neck with a hairband*)



Advanced Foundation and Advanced

- **Black** classical leotard
- Ballet tights (*pink, or to match skin tone*)
- **Split sole** Ballet shoes with ribbons
- Hair in a ballet bun (*short hair can be kept off the face/neck with a hairband*)

Pre-pointe/ Beginner pointe/ Intermediate pointe

- Any leotard & convertible ballet tights
- Ballet shoes
- Pointe shoes
- Hair in a bun
- Resistance band
- Yoga Strap band
- Small Pilates ball



Boys

Ballet tots – Primary

- **White**, T-shirt or leotard
- Navy or black shorts
- White ankle socks
- White or black ballet shoes



Grade 1 – Intermediate Foundation

- **White** leotard
- Navy or black fitted shorts or leggings
- White ankle socks
- White or black ballet shoes
- Black low heel character shoes